

State of Wyoming Corner Record

(In compliance with the *CORNER PERPETUATION AND FILING ACT*, Wyoming Statutes, 1997, Section 33-29-140, et. seq., and the Rules and Regulations of the Board of Registration for Professional Engineers and Professional Land Surveyors)

Reverse side of this form may be used if more space is needed.

Record of original survey and citation of source of historical information (if corner is lost or obliterated). Description of corner monumentation evidence found and/or monument and accessories established to perpetuate the location of this corner. Sketch of relative location of monument, accessories, and reference points with course and distance to adjacent corner(s) (if determined in this survey). Method and rationale for reestablishment of lost or obliterated corner.

G.L.O. Record: U.S. Deputy Surveyor, Henry G. Hay, September 3, 1870.; 80.00 Chains.....Set Granite Boulder 18 x 12 x 7 for corner to Sec's 14, 15, 22 & 23

Found: No stone monument as noted above. After analysis and review of found original corners north, south, east and west of this position, I accepted a fence corner post of old established fences extending North, East and West as memorializing the section lines and this corner position.

Set: At the base of said corner fence post and at the extension of fences extending north, east and west, I set a 2 ½ ins. diam. aluminum post, 30 ins. long, 26 ins. in the ground with a 3 ¼ ins. aluminum cap marked as noted below. Buried a 1 x 1 x 2 ins. orange fluorescent magnetic module in the bottom of the monument hole.

Aluminum Cap Markings
T13N R67W

S15	S14
S22	S23

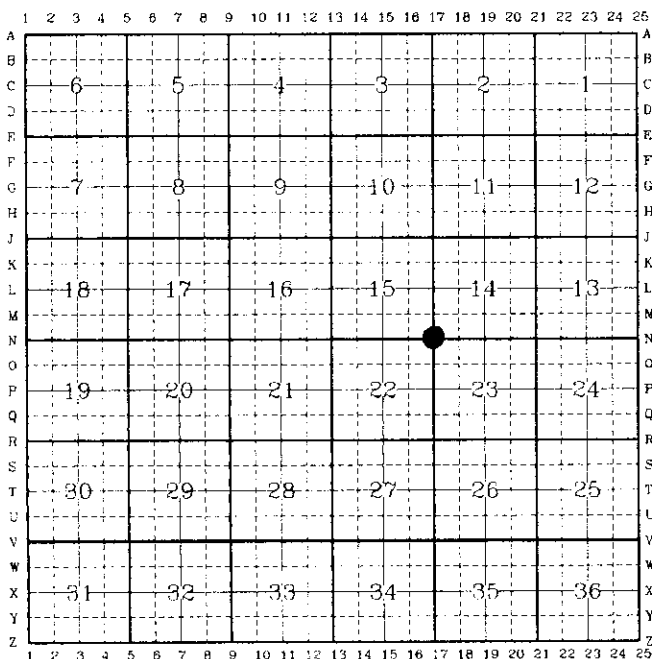
1999
P.L.S. 2927

See back of this sheet for measurements to other found or set monuments in the area.

Date of Field Work: Jan.12,1999

Office Reference: A.V.I. Job No. 2-2085C

CROSS INDEX DIAGRAM

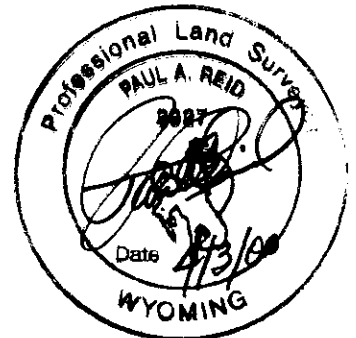


Firm/Agency, Address
 Paul A. Reid, P.L.S.
 A.V.I., p.c.
 2035 Westland Road
 Cheyenne, WY 82001

Telephone Number:
 (307) 637-6017

This corner record was prepared by me or under my direction and supervision.

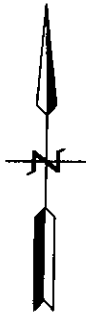
SEAL & SIGNATURE



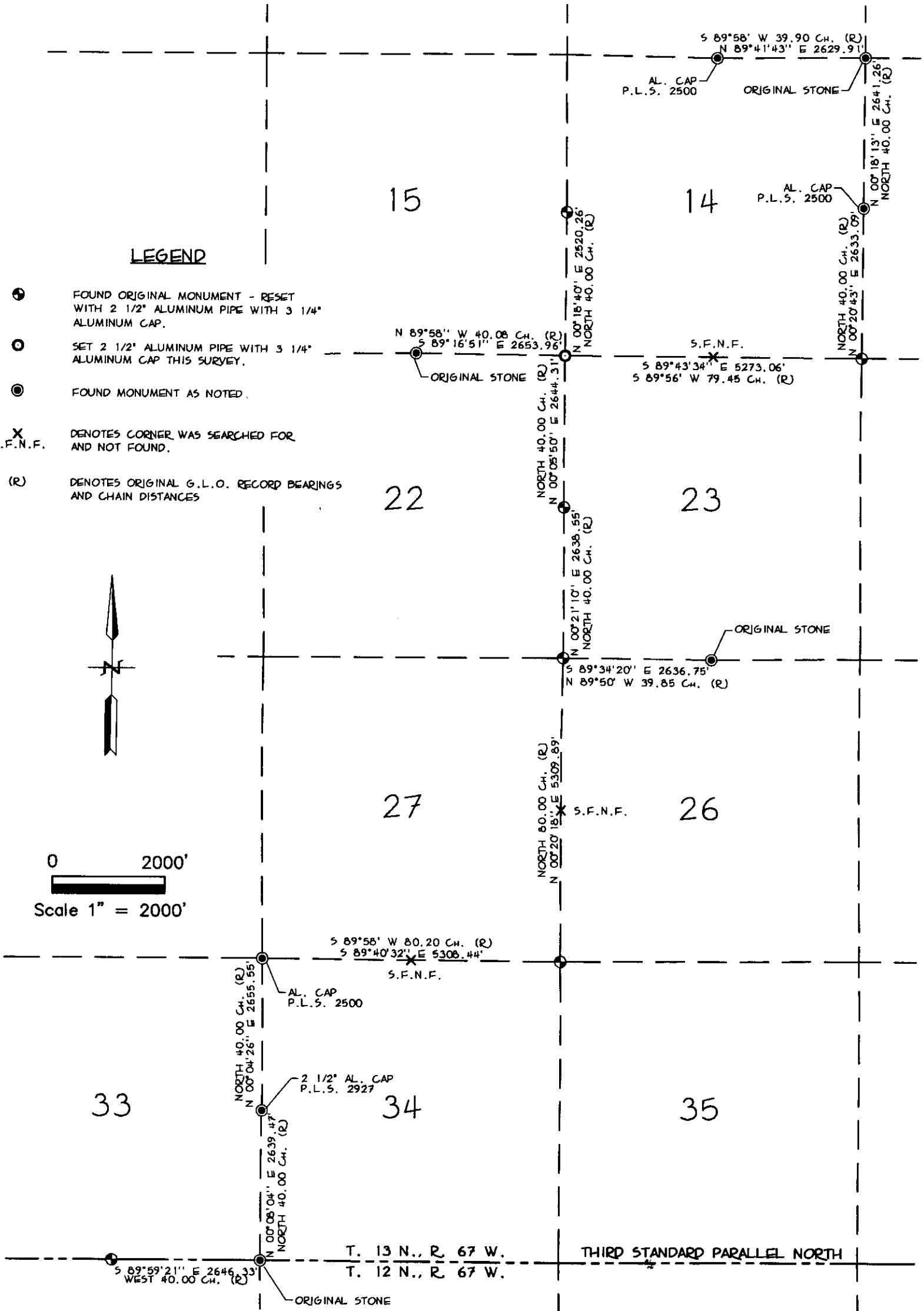
Corner Name: SW **Section:** 14 **T.13N., R.67W.;** 6th P.M. **Cross-Index No.:** N-17
SBRPEPLS/PLSW:March 1994

LEGEND

- ⊕ FOUND ORIGINAL MONUMENT - RESET WITH 2 1/2" ALUMINUM PIPE WITH 3 1/4" ALUMINUM CAP.
- SET 2 1/2" ALUMINUM PIPE WITH 3 1/4" ALUMINUM CAP THIS SURVEY.
- ⊙ FOUND MONUMENT AS NOTED.
- X S.F.N.F. DENOTES CORNER WAS SEARCHED FOR AND NOT FOUND.
- (R) DENOTES ORIGINAL G.L.O. RECORD BEARINGS AND CHAIN DISTANCES



0 2000'
 Scale 1" = 2000'



SKETCH OF SURVEY

T. 13 N., R. 67 W., 6TH P.M.
 LARAMIE COUNTY, WYOMING



RECORDED 4/03/2000 AT 2:13 PM REC# 271558 3K# 1550 PG# 1083
 DEBRA K. LATHROP, CLERK OF LARAMIE COUNTY, WY PAGE 2 OF 2